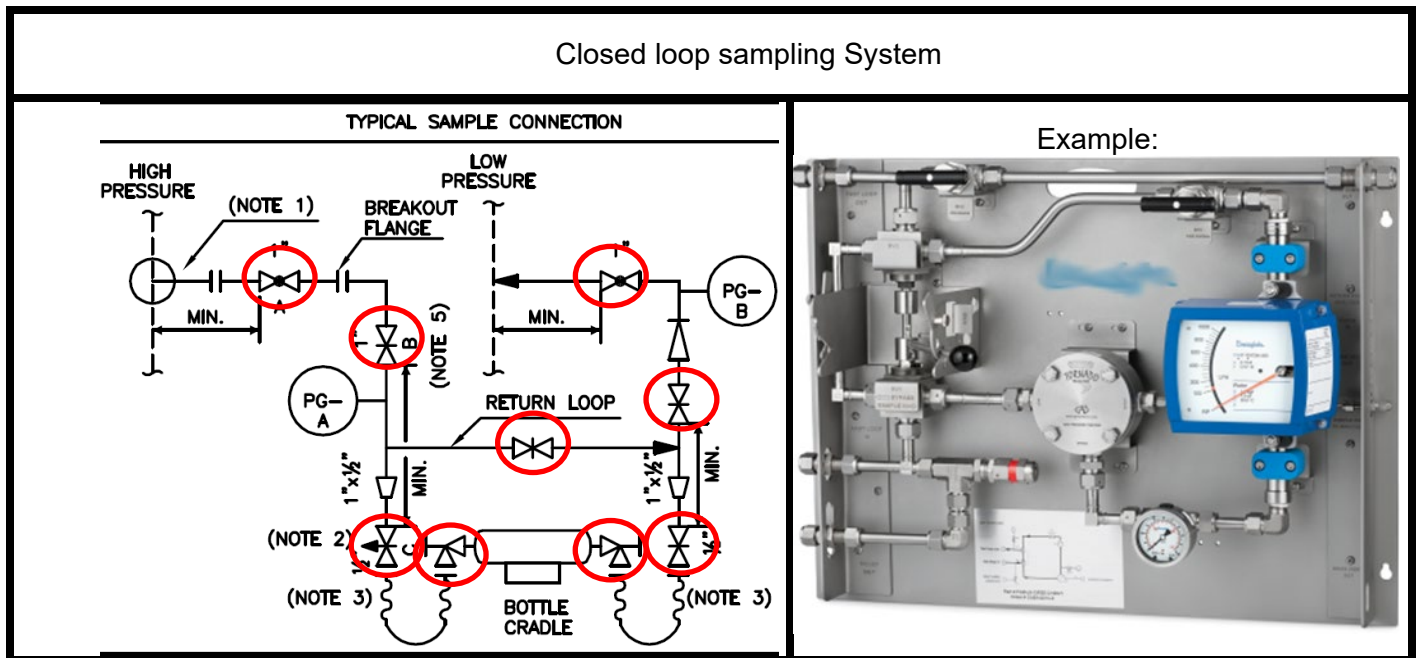


Typical Sample Panel / Closed loop system



What we call a typical “Sample Panel” is a system designed either by the customer’s engineers or an external engineering firm. These systems have been around for a long time.

However, to guarantee safety and a representative sample, and to prevent problems from happening, a lot of valves, pressure gauges and fittings are used. This in turns complicates the operator’s task and grabbing a sample becomes a highly complicated task. By definition, complicated systems are not intrinsically safe.

Why Use BIAR Sampling Systems?

“Dead Space Free” design results in a clean, uncontaminated sample - first time, every time.

Direct representative sample of process fluid – no purging / flushing required.

Protection of personnel.

Compliance with government/corporate environmental regulations.