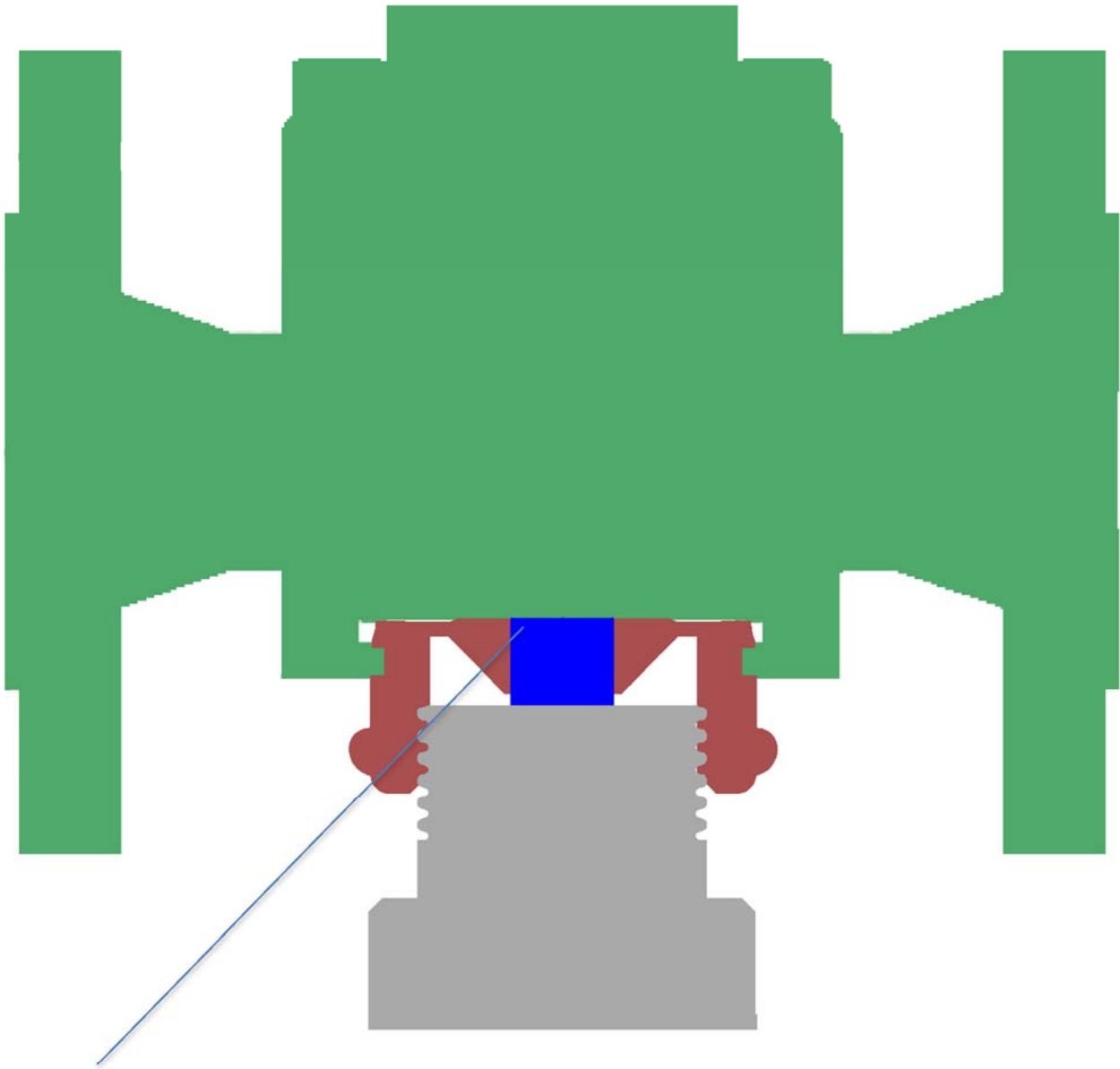


## How our valve comply with the Code of Federal Regulations by providing secondary containment



According to the Code of Federal Regulations, “Each open-ended valve shall be equipped with a plug”. Our safety plugs have, as standard, a PTFE part - as shown in blue - that acts as secondary containment. By screwing the safety plug tightly into the thread adapter, the outlet of the valve is completely blocked and secondary containment is thus provided. As a result, our valves comply with the Code of Federal Regulations.